

ALONE WITH YOU

WORDS & MUSIC
ROB SPANO
©SECRETCOVERMUSIC

SOFT FOLK MID-TEMPO

(DEDICATED TO MY BIGGEST FAN!...PAM SMITH)

$\text{♩} = 90$

E G#MI7 A AMI6

(HARMONICA INTRO)

A E C#MI7 G#MI7 Bsus B

THE SUN - LIGHT RI - SES WAY TOO SOON

E C#MI7 F#MI7 G#7

9 THE BIRDS THEN SING THEIR MORN - ING TUNE

A B C#MI7 Bmi7 E7 A

13 I'D TURN MY HEAD AND SEE AN AN - GEL THERE HEAV - EN SENT

AMI6 E F#7 Bsus B

17 NO OTH - ER LOVE COULD COME IN - STEAD OF YOU HERE NEXT TO ME

B E C#MI7 G#MI7 Bsus B

I WAS LOST IN MY LIFE

E C#MI7 F#MI7 G#7

25 WAND' - RING WHAT WAS BY DE - SIGN

A B C#MI7 Bmi7 E7 A

29 THEN YOU BEAMED SO BRIGHT LIKE THE STARS THAT SHINE IN THE NIGHT

AMI6 E C#MI7 F#MI7 Bsus E

33 YOUR LOVE LIGHTS MY HEART WHEN I'M A - LONE WITH YOU

ALONE WITH YOU

2

C

E C#MI7 G#MI7 B_{SUS} B E C#MI7 F#MI7 G#7



(HARMONICA SOLO)



45 ONCE LOST NOW FOUND A KEY TO A DREAM THAT NOW



49 STEPPED OUT OF MY MIND AND FOUND A PLACE TO BE REAL

D

E C#MI7 G#MI7 B_{SUS} B



57 AND AS WE WONDER DOWN THE ROAD



57 OUR LIVES WILL BE WHERE THEY UNFOLD



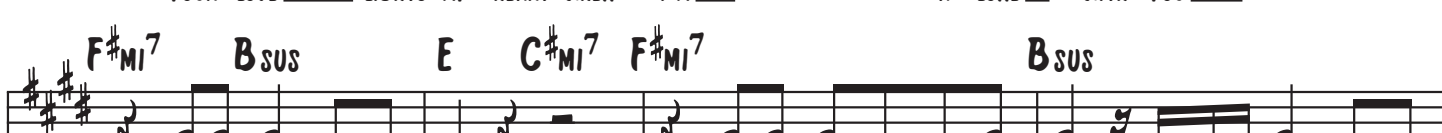
61 WITH YOU BY MY SIDE WE'LL TAKE THIS WORLD FOR A RIDE



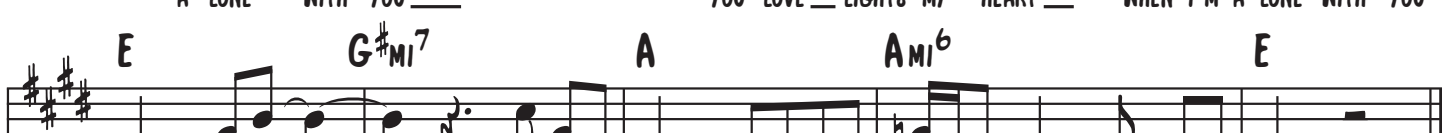
65 YOUR LOVE LIGHTS MY HEART WHEN I'M A-LONE WITH YOU



69 YOUR LOVE LIGHTS MY HEART WHEN I'M A-LONE WITH YOU



73 A-LONE WITH YOU YOU LOVE LIGHTS MY HEART WHEN I'M A-LONE WITH YOU



77 (HARMONICA)